

# Penthouse 402 Parergon

V&A WATERFRONT MARINA, CAPE TOWN

3 Bedrooms | 5 Bathrooms | Sleeps 6

Discover the best Cape Town has to offer in this impressive, luxurious double-volume penthouse in the heart of the V&A Waterfront precinct. Providing the best of both worlds: breathtaking mountain views and the tranquillity of the yacht basin below. Pristine surrounding views of Table Mountain, Signal Hill and Green Point Stadium mean you are spoilt for choice from any and every direction!

This one-of-a-kind penthouse boasts plush en-suite bedrooms, eight balconies, three lounges, two studies and two semi-enclosed balconies (ideal to use as your private yoga studio or exercise room). The highly secure estate offers 24/7 manned security and safe underground parking. In addition, a stunning selection of pools to cool off on hot summer days is at your leisurely disposal, and access to the well equipped gym overlooking the yacht basin for fitness lovers!

Enjoy the quiet refuge, independence, and privacy of your palatial waterfront penthouse, while still only a stroll away from world-renowned tourism destinations such as the V&A Waterfront, The Silo Hotel, Zeits MOCAA Art Gallery, and the One & Only Hotel and Spa.

An opulent getaway at 402 Parergon is one experience you'll never forget!



## PENTHOUSE GENERAL FEATURES

- This apartment has a UPS to ensure you are not too inconvenienced by the current power outages South Africa is experiencing. Lights, some plugs and for sure the internet wifi will remain powered during normal loadshedding conditions.
- Uncapped wireless fibre internet
- 4 Digital safes
- High security estate: private elevator provides direct access to apartment
- Aircon/ heating throughout
- Housekeeping is included in the rate every 4 days. If you stay less than 4 days, you can still arrange housekeeping at an additional charge
- All linen and towels provided
- Hairdryers, liquid soap, shower gel, shampoo and conditioner included
- Marina yacht basin, city, and mountain views
- 2 secure parking bays in basement with direct access to building
- Satellite TV
- Gas BBQ

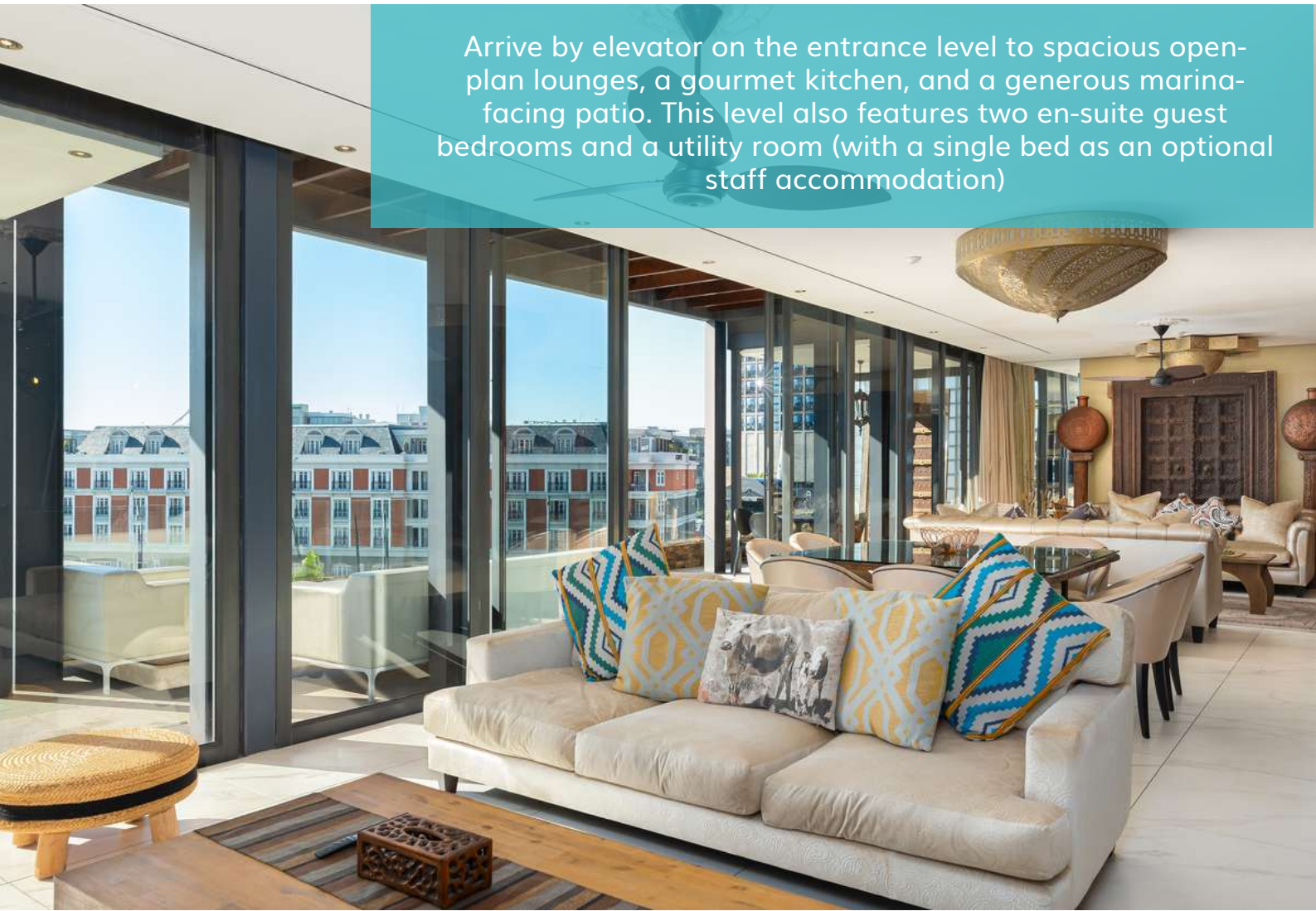




# Entrance Level Living



Arrive by elevator on the entrance level to spacious open-plan lounges, a gourmet kitchen, and a generous marina-facing patio. This level also features two en-suite guest bedrooms and a utility room (with a single bed as an optional staff accommodation)





# Dining, Living & Kitchen

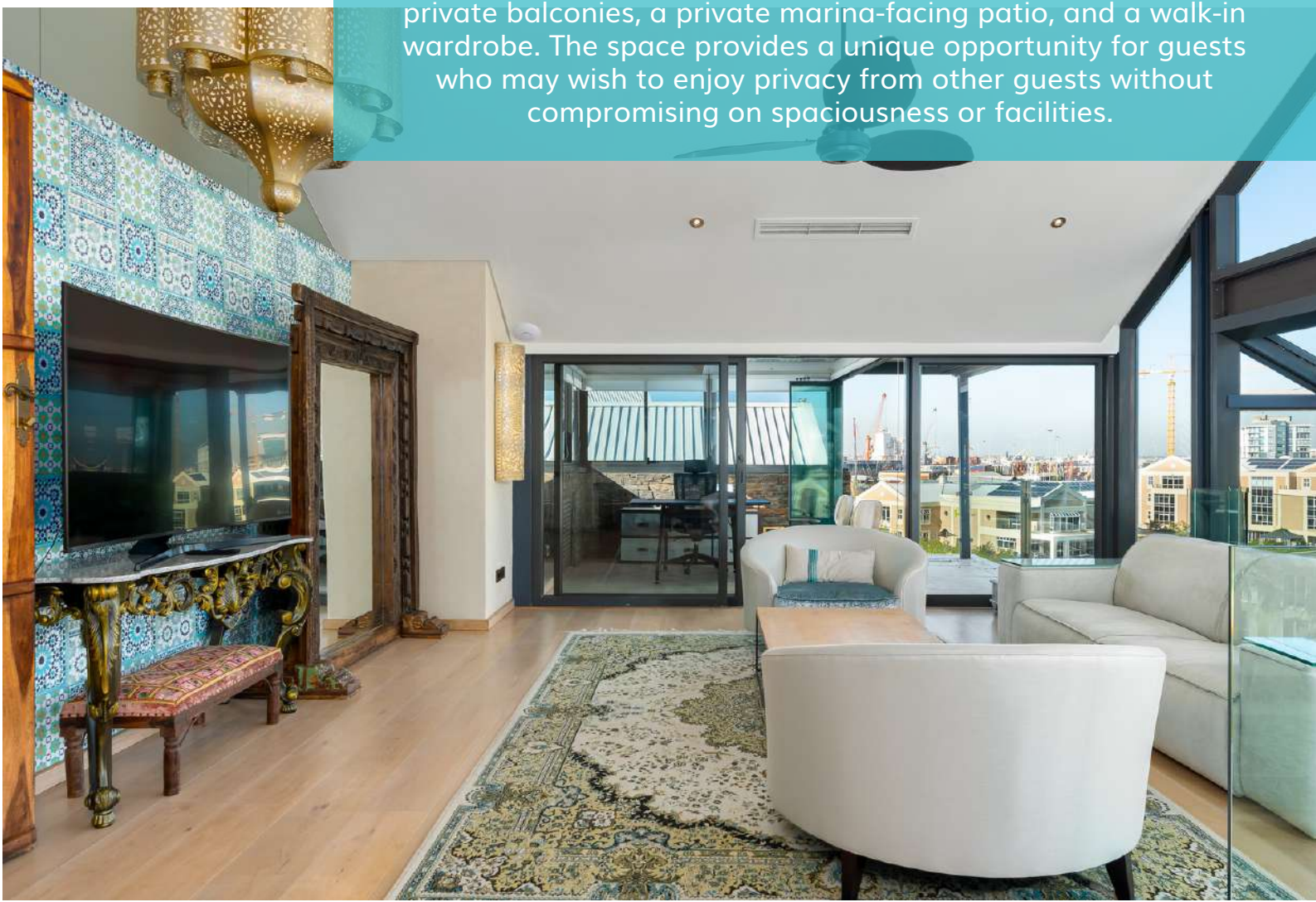




# Upper Level Living: Lounge

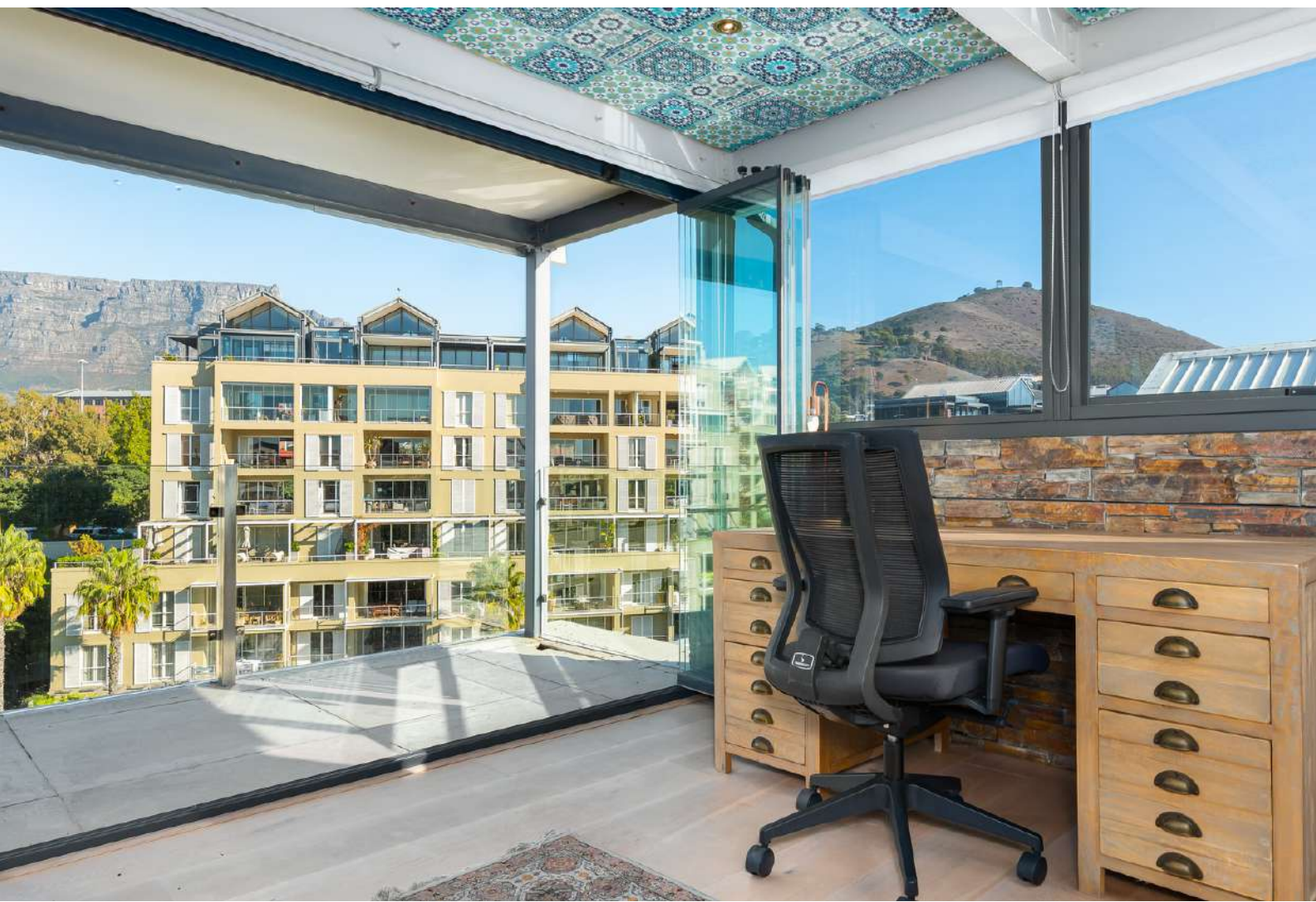


The staircase will lead you to the opulent Main Suite on the upper level of the penthouse. This exclusive area features a plush and spacious living room, two studies with canal views, a marina-facing bedroom with two en-suite bathrooms, two semi-enclosed private balconies, a private marina-facing patio, and a walk-in wardrobe. The space provides a unique opportunity for guests who may wish to enjoy privacy from other guests without compromising on spaciousness or facilities.





# Upper Level Living: 2 Studies





# Main Bedroom on Upper Level



- King size bed with wrap around curtain
- Sliding doors leading to balcony and two semi-enclosed patios
- Yacht basin, Green Point Stadium, and city views

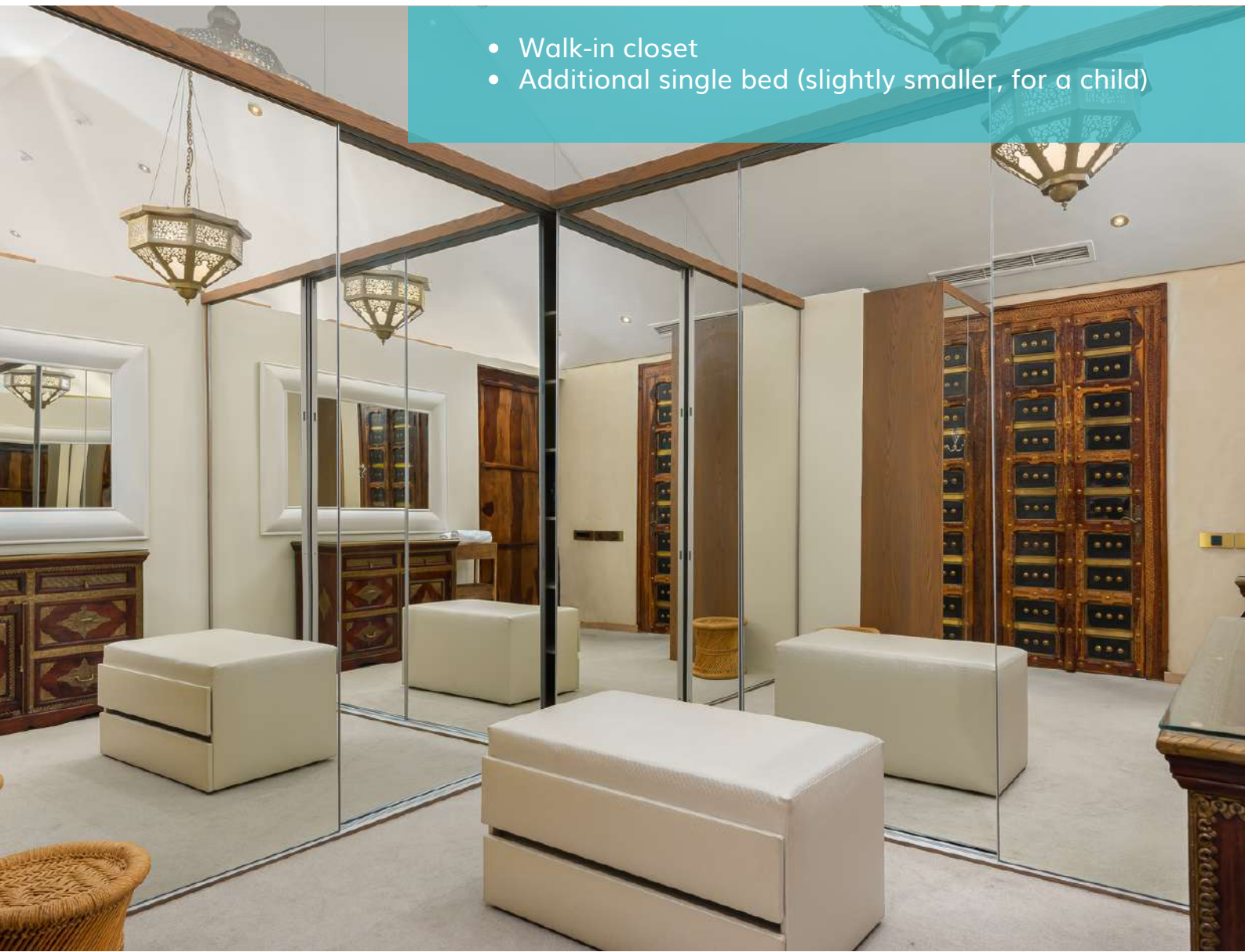




# Main Bedroom



- Walk-in closet
- Additional single bed (slightly smaller, for a child)





# Main En-Suite 1



- First en-suite with copper bath, walk-in shower and a hand-held bidet
- Second en-suite with shower





# 2nd Bedroom & Bathroom



- Queen size bed
- En-suite with shower and hand-held bidet
- Sliding doors leading to private balcony
- Mountain views
- Aircon/ heating and ceiling fan
- Work desk
- Smart TV





# 3rd Bedroom & Bathroom



- King size bed
- En-suite with shower and hand-held bidet
- Sliding doors leading to private balcony
- Mountain and city views
- Aircon/ heating and ceiling fan
- Work desk
- Smart TV





# *Sensational Views*

